



# Survive and thrive in your summer quarter online or hybrid class

Keep reading for "beginning-of-the-quarter" info.

[Read this message online.](#) [Read text-only version.](#)

Information for Online Learners from the  
Student Help Desk

Number 4

## In This Issue

- [How's Your Class Going?](#)
  - *How to take a quiz*
  - *How to submit an assignment*
  - *How to view your grades*
- [Anti-Procrastination Strategies](#)
- [Remote Access with VMware](#)
- [Canvas Student Guide](#)

## Resources for Online Learners

- [Whatcom's main eLearning page.](#) Also check out the *Student Tutorials and Resources page* you can get to from there.
- [Online tutoring by the WCC Writing Center.](#)
- [Online tutoring in math and other subjects](#) (eTutoring.org).

Welcome to online learning at Whatcom Community College! This is the fourth of five beginning-of-the-quarter messages to help you get started in your online or hybrid class. If you missed the earlier ones, they're posted on the main [eLearning page](#) of Whatcom's website.

## How's Your Class Going?

We want to make sure you got off to a good start in your online or hybrid class. There are real people sending out these messages, so you're welcome to hit the "reply" button and we'll be happy to supply technical assistance, answers to your questions and support. Let us know how we can help.

- **Were you able to log in?** If you're still having problems, it's getting really late! Contact the Student Help Desk right away!
- **Are you able to view the syllabus, contact your instructor, turn in assignments, take quizzes and look at your grades?** Here are a few useful links:
  - [How to take a quiz](#)
  - [How to submit an assignment](#)
  - [How to view your grades](#)

If you still need to activate your **Student Network Account**, please see the instructions in [our third getting-started message.](#)

- [Whatcom's Online Math Center.](#)
- [Access to the WCC library's online databases](#) (must activate your student network account first).
- [Online research help from a librarian.](#)

## Contact Us

[studenthelpdesk@whatcom.edu](mailto:studenthelpdesk@whatcom.edu)

For **technical issues** including but not limited to logging on, computer account problems, remote access to campus, email, Canvas, other software programs, or how to turn in assignments, contact the **Student Help Desk** located in Heiner 104. Summer hours are Monday through Thursday 8am-6pm and Friday 8am to noon. You can also contact us by phone at 360-383-3410.

[advise@whatcom.edu](mailto:advise@whatcom.edu)

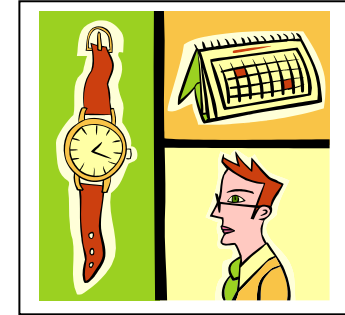
An **online advisor** is available to assist you by email if you have scheduling, academic planning, or other non-technical issues with your online class. You can also contact your online advisor by calling 360-383-3080.

If there's **anything you can't access or anything you have questions about**, please contact us at the [Student Help Desk](#). We're here to help make your learning experience a positive and successful one!

## Anti-Procrastination Strategies You Can Use

Are you logging in regularly and keeping up with the deadlines?

Simply staying on top of things is one of the keys to success in online learning. If you're noticing a tendency to procrastinate, give yourself a boost and try one of these [strategies to beat procrastination](#).



## Remote Access with VMware

*Use your student network account to get access to software applications and file storage from off-campus!*

Here's how it works: you download a program called **VMware Horizon Client** that allows you to use your own computer as if it were a computer in one of the college's computer labs. It gives you access to all the same software you can use on campus, including any course-specific software you're using this quarter. You save your files (up to 5GB) in the same college "Documents" file that you have access to from a campus computer lab.

You can also use VMware to access all the library's databases from home.

Want to try it? [Click here to log into MyWCC](#). Go to your My Account page and look for "Remote Access: Downloads and instructions for VMware."

Here are a few tips:

- You'll have to restart your computer partway through the installation. When it starts up again, make sure you're connected to the Internet, double-click the VMware icon on your desktop, and click the desktop.whatcom.edu icon.
- On the login page, enter your student network account username and password, and be sure ORCA is selected as the domain.
- When a black box appears that says "do not close this box," don't close it! It'll disappear on its own.

---

## Canvas Student Guide



For step-by-step instructions on how to do everything the Canvas software lets you do, see the [Canvas Student Guide](#).

---