



# WCC Waste Audit

## Thursday, Apr. 20

### 11:00-2:00

### In front of Syre

What are we sending into the landfill?

What does our garbage say about us?

Come volunteer!!!

Help sort the trash!

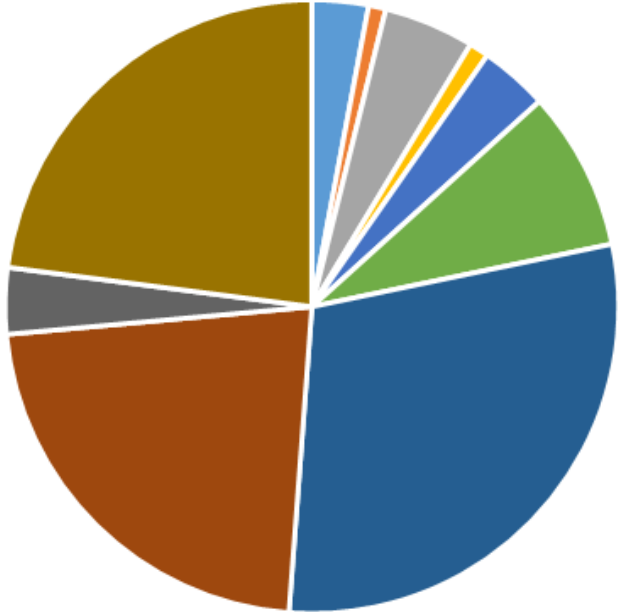
**GET YOUR HANDS DIRTY  
FOR A CLEANER CAMPUS**

*For more information, contact Jennifer Zovar – [jzovar@whatcom.edu](mailto:jzovar@whatcom.edu)*





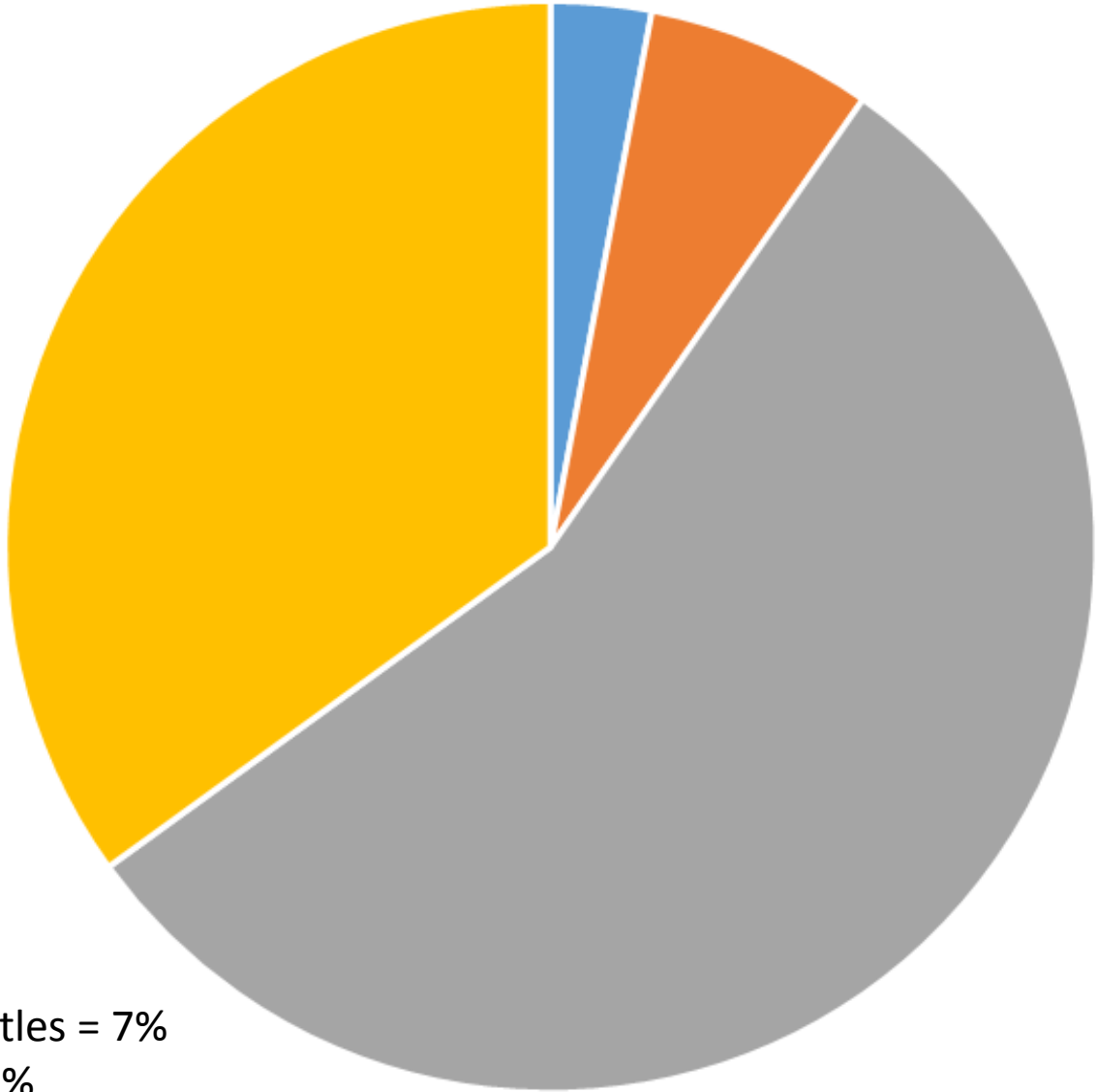
### Waste Audit



- Paper
- Recyclable glass
- Recyclable plastic
- Recyclable aluminium
- Film plastic
- Trash bags
- Compost
- Paper towels
- Liquid
- Landfill

	Weight (kg)	%
Paper	4.6	3%
Recyclable glass	1.4	1%
Recyclable plastic	7.4	5%
Recyclable aluminium	1.6	1%
Film plastic	5.6	4%
Trash bags	13	8%
Compost	45.6	29%
Paper towels	34.6	22%
Liquid	5.4	3%
Landfill	35.5	23%
<b>Total</b>	<b>154.7</b>	<b>100%</b>

# Waste Audit - Simplified Chart



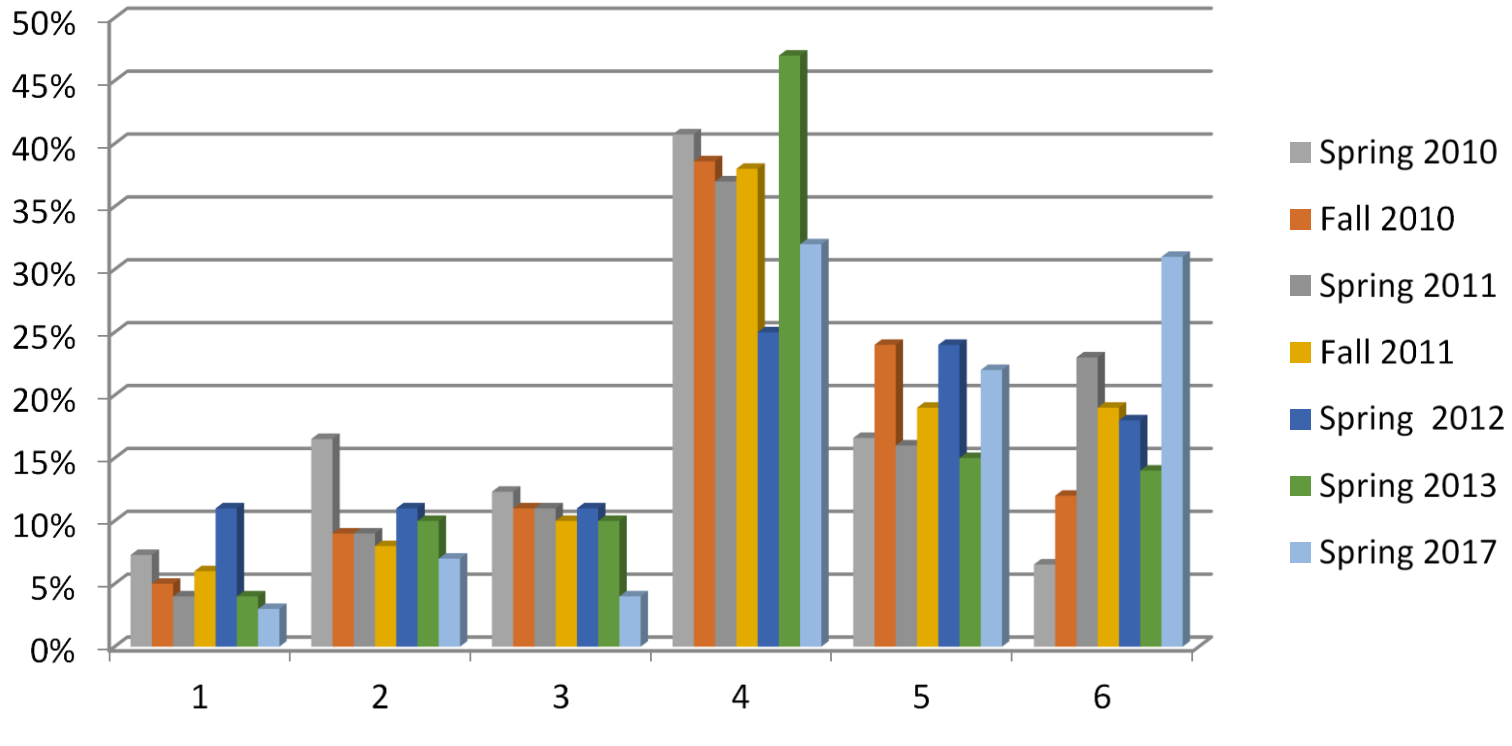
Compost = 55%  
Landfill = 35%  
Recyclable cans/ bottles = 7%  
Recyclable paper = 3%

Paper Recycle Compost Landfill

# What about coffee cups?

- Our group decided to look at the amount of to go cups that could be eliminated from the compost and recycling if people were to bring their own reusable cups. We counted 388 cups totaling to 2.299 kg of compostable material (paper cups) and 3.133 kg of plastic recyclable material (plastic cups and total lids.) Since the total number of recyclable plastic totaled at 7.4 kg our counted cups and lids made up nearly half of the counted material. And although the compostable material totaled to 45.6 kg while going through the trash during the audit the cups were a noticeable amount of the compost. Besides encouraging people to bring their own cups by places offering discounted drinks we thought the school could offer free reusable mugs to every student during registration to further encourage the preservation of the material and the environment as a whole.

# Waste Audit Comparison



1= Mixed Paper

2= Bottles/Cans

3= Film Plastic (Landfill)

4= Compost

5= Paper towels (Compost)

6= Landfill